



California

501 Park Way
Mill Valley, California 94941
Telephone: (415) 781-6080
Facsimile: (415) 358-4340

Kansas

307 Plymate Lane
Manhattan, Kansas 66502
Telephone: (785) 539-6305
Facsimile: (415) 358-4340

SURFACE SYSTEMS & INSTRUMENTS, LLC

www.smoothroad.com

Custom Test Equipment • Mobile Technology Solutions

CS9200 Multiple Purpose Profiler



Custom Trailer Platform Works as a Lightweight or High Speed Profiling System



Professionally Engineered Air-Ride Trailer With Independently Suspended Wheels



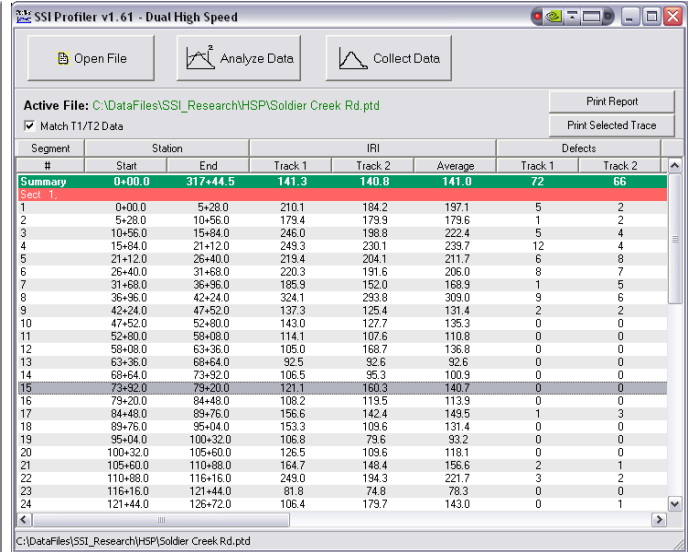
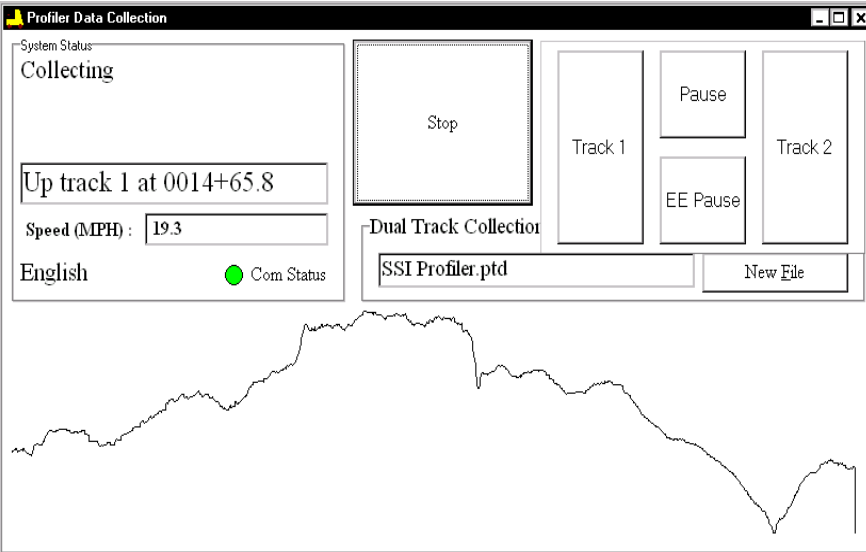
Quick Access to Pavement When Towed Behind Lightweight Vehicle



Collects Data Up to 70 MPH Towed Behind Highway Speed Vehicle

HARDWARE FEATURES	SOFTWARE FEATURES
<ul style="list-style-type: none"> • Custom built trailer with 100% self-contained profiling system. • Works as lightweight profiling system when towed behind ATV • Functions as high speed profiler when towed behind truck or car. • No Wires! Entire system runs on tow vehicle 12VDC power supply. • True ASTM Class 1 profiling system at all collection speeds. 	<ul style="list-style-type: none"> • Feature rich Windows software for calibration, data collection and analysis software run on touch-screen Toughbook computer. • On-Screen user's manual and instructions for profiling software. • Real time diagnostics continually monitor health of profiling system and facilitate prompt resolution of support issues.
<ul style="list-style-type: none"> • Ultra-compact profiling system components. All electronics and sensors smaller than Toughbook laptop used to operate the system. • Core components field installable and available by express shipping. • Optional wide footprint sensors for concrete pavements. 	<ul style="list-style-type: none"> • Instant test results and on-screen view of profile traces and reports. • Collection system pauses if vehicle slows <5mph or when stopped. • Add new profile data to existing data files for comparison of original condition with constructed surfaces.
<ul style="list-style-type: none"> • Rugged suitcase enclosure for notebook computer, on-board printer (with power assisted paper spooling). • AC/DC power supplies. • Panasonic Toughbook 19 military specification notebook computer with daylight readable Touchscreen controls. 	<ul style="list-style-type: none"> • Profile reports and traces available on-screen, one-touch PDF images, hard copy from on-board printer, or in electronic format. • Colorized traces and highlights of bonus/penalty profile areas. • One-touch data export to ERD, PPF, and Excel templates (supplied).
<ul style="list-style-type: none"> • Single or dual track systems available. <i>(Note: single track systems have patented ability to report dual track profiles).</i> • All-in-Cab operation—collect/analyze data without leaving vehicle. • Sensor modules adjust vertically/laterally for maximum flexibility. • RF radio wireless transmission of profile data. 	<ul style="list-style-type: none"> • Unmatched precision in detecting surface features exact dimensions of localized roughness—<i>Proven and Guaranteed!</i> • Localized roughness reports predict dimensions of grind/fill areas. • Simulation routines for estimating ride index and localized roughness after corrective grinding or overlays.
<ul style="list-style-type: none"> • Wide range of speeds (~5 mph to 70 mph). • Multiple data collection methods allow versatility and cost savings: (1) SSI reverse direction trigger collects exact stations without pre-marking test sections, (2) electric-eye sensor triggers by reflective tape, and (3) touchscreen push button trigger for start/stop. 	<ul style="list-style-type: none"> • Profile data reported under various profile indices [International Roughness Index (IRI), Profilograph Index (PI), Ride Quality Index (RQI), Half Car Ride Index (HRI), Ride Number, etc.] • User-selectable data collection and analysis parameters (project details, filtering methods, blanking band, bump/dip templates, etc.).
<ul style="list-style-type: none"> • GPS subsystem (optional) with real-time display of GPS position, GPS correlation with profile stations, and Google Earth integration. • Surveying subsystem with high resolution RTK corrections available with integrated site design and machine control options. 	<ul style="list-style-type: none"> • Industry leading Windows software designed by PhD engineers with decades of profiling industry experience. • Desktop software supplied for viewing, analyzing, printing and emailing of profile data.
<ul style="list-style-type: none"> • Buy or Rent. 	<ul style="list-style-type: none"> • Encrypted raw data for infinite reanalysis with variable parameters.

▼ Industry Leading Windows Profiling System Software ▼



▲ COMPUTER INSTRUCTED DATA COLLECTION AND CALIBRATION ROUTINES ▲

▲ IMMEDIATE RESULTS AND ADVANCED DATA ANALYSIS FEATURES ▲

SURFACE SYSTEMS & INSTRUMENTS, LLC

California Division
 501 Park Way, Mill Valley, California 94941
 Tel: (415) 781-6080 • Facsimile: (415) 358-4340
www.smoothroad.com

Kansas Division
 307 Plymate, Manhattan, Kansas 66502
 Tel: (785) 539-6305 • Facsimile: (415) 358-4340
info@smoothroad.com