



California
 501 Park Way
 Mill Valley, California 94941
 Telephone: (415) 781-6080
 Facsimile: (415) 358-4340

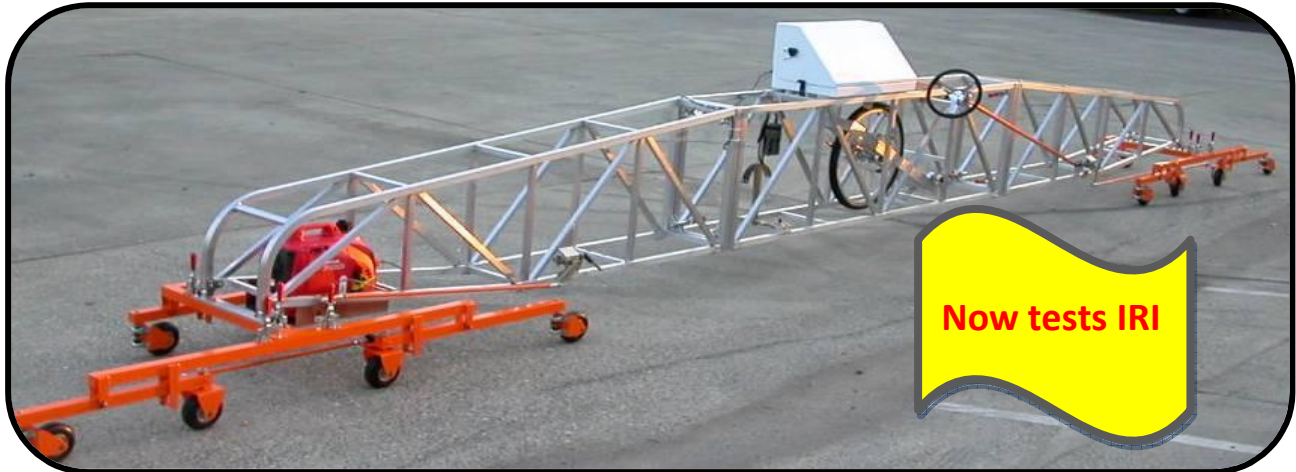
Kansas
 307 Plymate Lane
 Manhattan, Kansas 66502
 Telephone: (785) 539-6305
 Facsimile: (415) 358-4340

SURFACE SYSTEMS & INSTRUMENTS, LLC

www.smoothroad.com

Custom Test Equipment • Mobile Technology Solutions

CS8500 PROFILOGRAPH



HARDWARE FEATURES

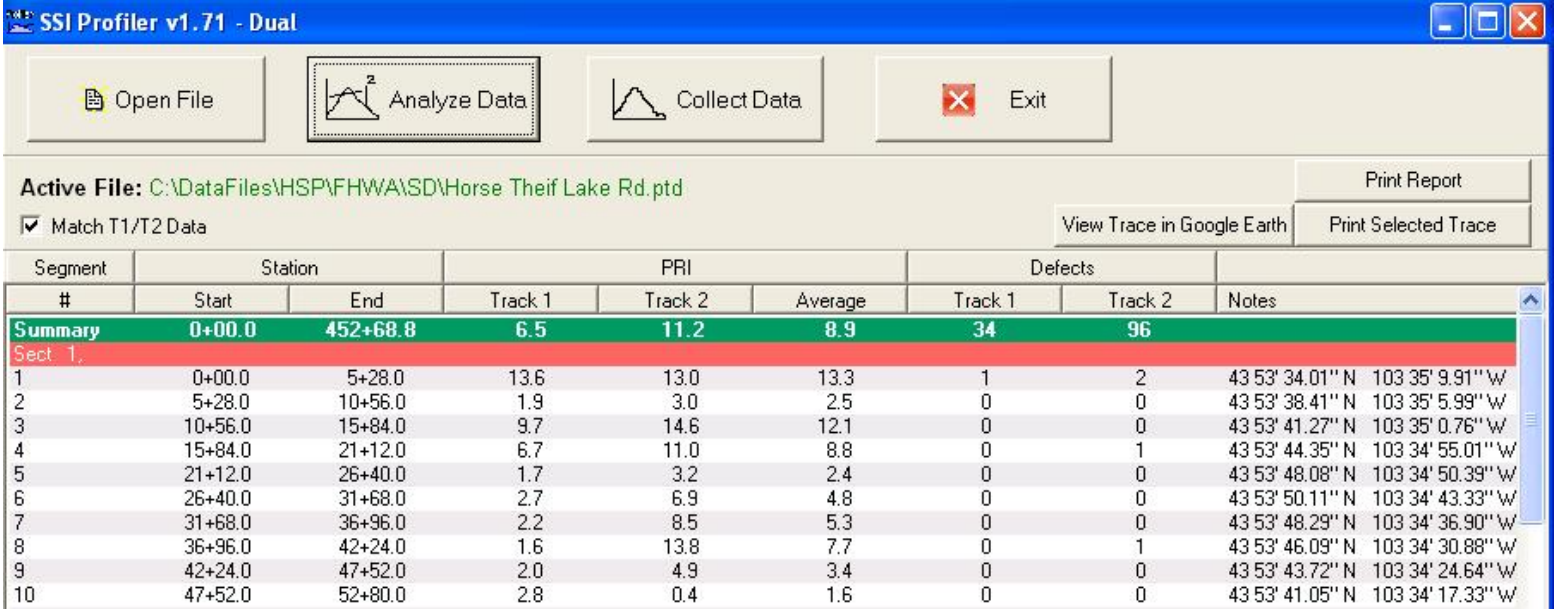
SOFTWARE FEATURES

<ul style="list-style-type: none"> • The original and <i>only true</i> California type system. (CS8500 is the new/replacement system for Cox and McCracken branded systems). • Guaranteed compliance with agency and ASTM specifications. • Professionally engineered hardware refined over 50 years. 	<ul style="list-style-type: none"> • Easy to learn, easy to use Windows software programs. • Multiple profile Indexes supported (PRI, IRI, HRI, RN). • Computer instructed calibration and data collection routines. • Feature rich, mature data analysis software.
<ul style="list-style-type: none"> • One-person assembly and operation. • Aluminum frame and support wheels assemble in minutes. • Portable operator control housing with AC/DC power supplies. 	<ul style="list-style-type: none"> • Collect dual wheel paths from either direction or any starting point. • Dual wheel paths test results on one trace with results averaged. • Two trace reports allow assessment of profile across lane.
<ul style="list-style-type: none"> • Bi-directional frame operation (reversible steering hardware orients system to test adjacent wheel path without turn-around). 	<ul style="list-style-type: none"> • English or Metric data collection and reporting. • Display of test results, stationing, and profile trace during collection.
<ul style="list-style-type: none"> • Panasonic Toughbook computer with Touchscreen controls. • Toughbook computer is Mil-Spec (<1.5% annual failure rate). • Lightweight generator for AC power. • Optional DC battery. 	<ul style="list-style-type: none"> • Must-grind bumps/dips display in real time with audible alarm. • Customized localized roughness reports display dimensions and peak magnitude for each bump and dip.
<ul style="list-style-type: none"> • GPS subsystem displays of GPS position, integrates coordinates with profile stations, localized roughness, and Google Earth. 	<ul style="list-style-type: none"> • Profile reports and traces on-screen, in PDF images, or hard copy. • Raw data exports to multiple formats (Excel, ProScan, ERD, and PPF).
<ul style="list-style-type: none"> • Adjustable hardware for over/under steering on curved surfaces. • Reversible brake for parking frame on sloped surfaces. • Optional enclosed cargo trailer with engineered hardware for secure storage and transit of CS8500 system. 	<ul style="list-style-type: none"> • Raw profile data encrypted for maximum security. • Profile data infinitely re-writable with different parameters. • Parameters adjust comply with all commonly used agency specifications (e.g. ASTM, DOT, Transport Ministry, FAA, and USACE).
<ul style="list-style-type: none"> • All major spare parts stocked and available by expedited delivery. • Warranty on all individual and integrated system components. 	<ul style="list-style-type: none"> • Add new data to existing profile data files for comparison of original and corrected surfaces. • Track ride improvement throughout project.
<ul style="list-style-type: none"> • Optional on-board printer for field printing traces and reports with power assisted paper take-up for auto-scrolling of profile traces. 	<ul style="list-style-type: none"> • Software license for field and desktop computers. • Worldwide on-site operator training and certifications available.
<ul style="list-style-type: none"> • Bridge configuration available (e.g. CalTrans Test 547). • Buy or Rent (equipment only or with trained operator). 	<ul style="list-style-type: none"> • Software updates by internet download (self-extracting). • Worldwide customer support.

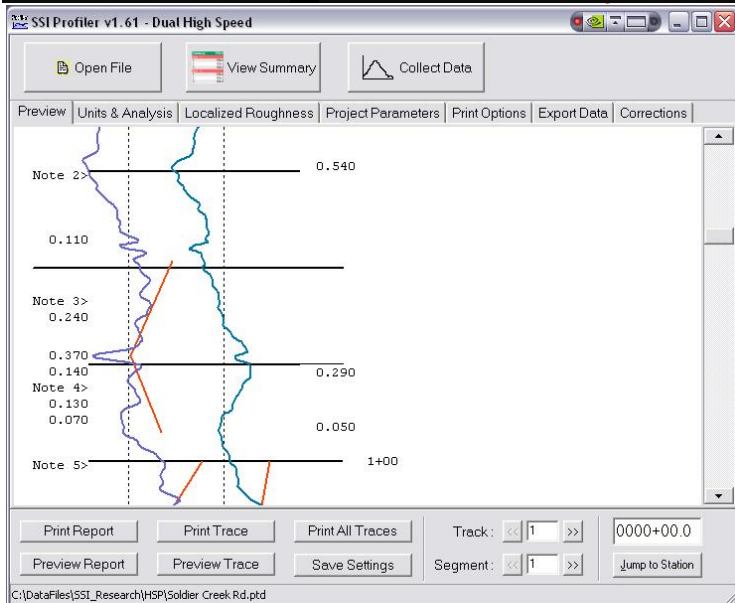




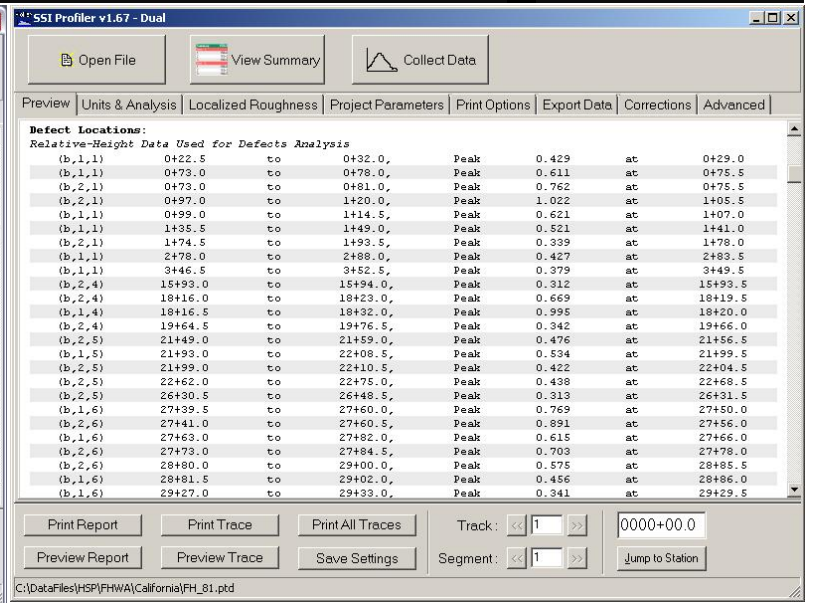
CS8500 Computerized Profilograph



▲ Main-Screen Summary View of Test Results, Defects and GPS Coordinates ▲



▲ On-Screen View of Dual Wheel Path Profile Traces ▲



▲ Custom Reports Pinpoint Dimensions of Bumps and Dips ▲



▲ Detachable Field Housing Works in Field or Office ▲



▲ Mil-Spec Toughbook Computer with Touchscreen ▲



Surface Systems & Instruments, LLC

California Division

501 Park Way, Mill Valley, California 94941
 Tel: (415) 781-6080 • Facsimile: (415) 358-4340
www.smoothroad.com

Kansas Division

307 Plymate Lane, Manhattan, Kansas 66502
 Tel: (785) 539-6305 • Facsimile: (415) 358-4340
 Email: info@smoothroad.com

