



<b>California</b> 501 Park Way Mill Valley, California 94941 Telephone: (415) 781-6080 Facsimile: (415) 358-4340	<b>Kansas</b> 307 Plymate Lane Manhattan, Kansas 66502 Telephone: (785) 539-6305 Facsimile: (415) 358-4340
--	--

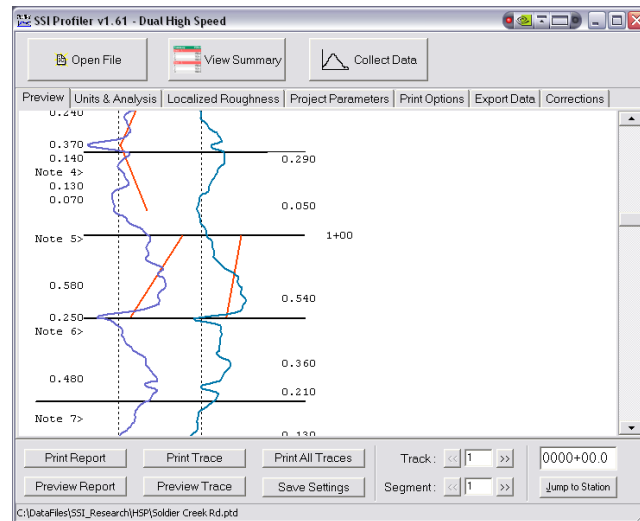
**SURFACE SYSTEMS & INSTRUMENTS, LLC**  
Custom Test Equipment • Mobile Technology Solutions

[www.smoothroad.com](http://www.smoothroad.com)

# CS8700 LIGHTWEIGHT PROFILER FOR CONCRETE



**Engineered to Reduce Impact of Concrete Tines, Grooves and Coarse Textures**



Wide Footprint Laser Sensors

Mil-Spec Computer With Touch Screen

Feature Rich Windows Software



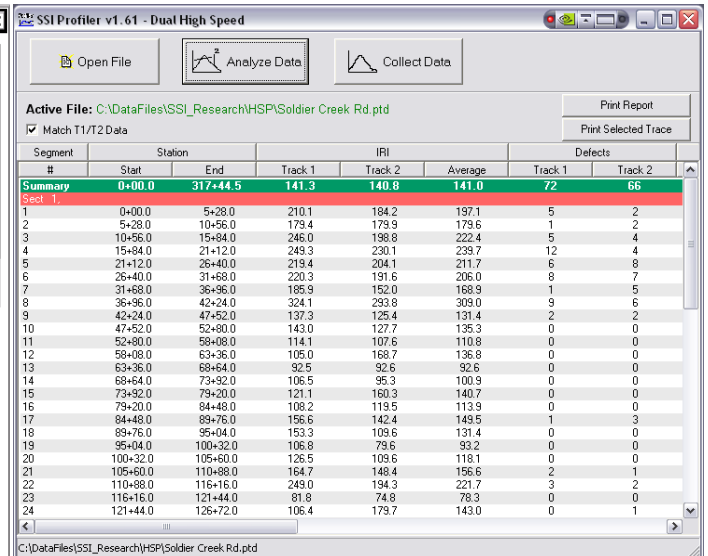
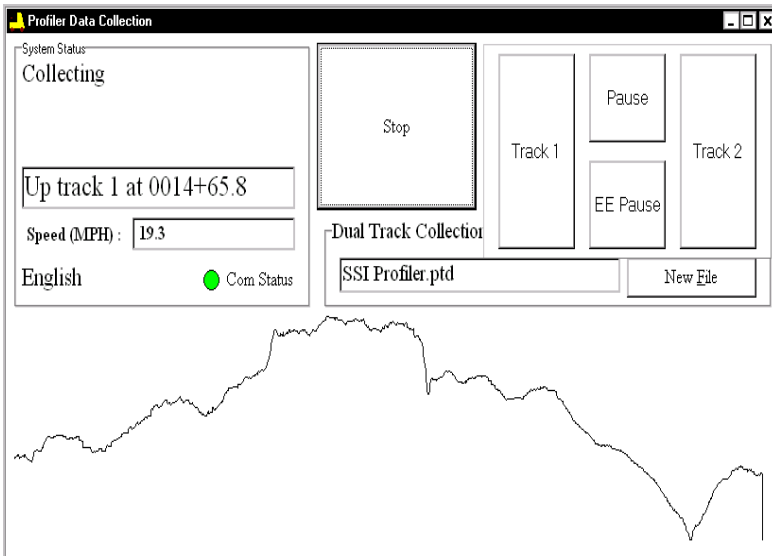
## HARDWARE FEATURES

- Specially designed for concrete pavements. Wide footprint sensor (multiple single point or RoLine) to reduce impact of tines, grooves and diamond grinding on ride index values.
- Single or dual laser systems available. • Single laser systems have patented ability to produce dual wheel path reports and traces.
- ASTM Class I profiling device.
- Ultra-compact profiling system components. All electronics and sensors smaller than Toughbook laptop used to operate the system.
- Core components field installable and available by express shipping.
- All-in-Cab operation—collect/analyze data without leaving vehicle.
- Panasonic [Toughbook 30](#) military specification notebook computer with daylight readable touch-screen controls.
- Lightweight, aluminum industrial utility vehicle with 400cc engine.
- Vehicle uplifts supplied, including custom hard top, alternator, toolbox and four side safety strobes.
- Professionally engineered sensor mounts are vibration free and allow for lateral and horizontal repositioning of sensors.
- Wide range of speeds (~5 mph to 70 mph).
- Multiple data collection methods allow versatility and cost savings: (1) SSI reverse direction trigger collects exact stations without pre-marking test sections, (2) electric-eye sensor triggers by reflective tape, and (3) touch-screen push button trigger for start/stop.
- GPS subsystem (optional) with real-time display of GPS position, GPS correlation with profile stations, and Google Earth integration.
- Surveying subsystem with high resolution RTK corrections available with integrated site design and machine control options.
- Buy or Rent.

## SOFTWARE FEATURES

- Feature rich Windows software for calibration, data collection and analysis software run on touch-screen Toughbook computer.
- On-Screen user's manual and instructions for profiling software.
- Real time diagnostics continually monitor health of profiling system and facilitate prompt resolution of support issues.
- Instant test results and on-screen view of profile traces and reports.
- Collection system pauses if vehicle slows <5mph or when stopped.
- Add new profile data to existing data files for comparison of original condition with constructed surfaces.
- Profile reports and traces available on-screen, one-touch PDF images, hard copy from on-board printer, or in electronic format.
- Colorized traces and highlights of bonus/penalty profile areas.
- One-touch data export to ERD, PPF, and Excel templates (supplied).
- Unmatched precision in detecting surface features exact dimensions of localized roughness—*Proven and Guaranteed!*
- Localized roughness reports predict dimensions of grind/fill areas.
- Simulation routines for estimating ride index and localized roughness after corrective grinding or overlays.
- Profile data reported under various profile indices [International Roughness Index (IRI), Profilograph Index (PI), Ride Quality Index (RQI), Half Car Ride Index (HRI), Ride Number, etc.]
- User-selectable data collection and analysis parameters (project details, filtering methods, blanking band, bump/dip templates, etc.).
- Industry leading Windows software designed by PhD engineers with decades of profiling industry experience.
- Multiple profile trace reporting for lateral surface analysis.
- Desktop software supplied for viewing, analyzing, printing and emailing of profile data.
- Encrypted raw data for infinite reanalysis with variable parameters.

### ▼ Industry Leading Windows Profiling System Software ▼



▲ Computer Instructed Data Collection and Calibration Routines ▲



▲ Immediate Results with Advanced Data Analysis Features ▲

## SURFACE SYSTEMS & INSTRUMENTS, LLC

### California Division

501 Park Way, Mill Valley, California 94941  
 Tel: (415) 781-6080 • Facsimile: (415) 358-4340  
[www.smoothroad.com](http://www.smoothroad.com)

### Kansas Division

307 Plymate, Manhattan, Kansas 66502  
 Tel: (785) 539-6305 • Facsimile: (415) 358-4340  
[info@smoothroad.com](mailto:info@smoothroad.com)