



California
 501 Park Way
 Mill Valley, California 94941
 Telephone: (415) 781-6080
 Facsimile: (415) 358-4340

Kansas
 307 Plymate Lane
 Manhattan, Kansas 66502
 Telephone: (785) 539-6305
 Facsimile: (415) 358-4340

SURFACE SYSTEMS & INSTRUMENTS, LLC

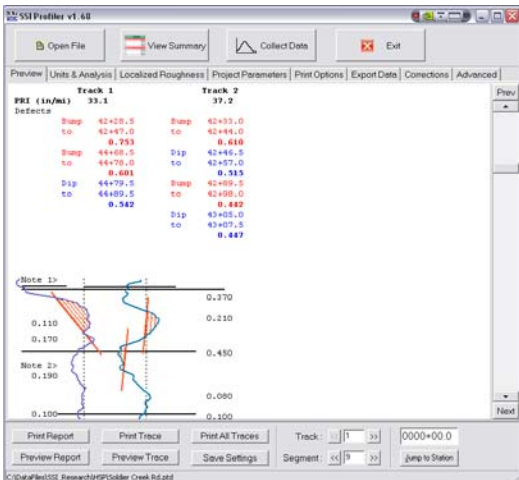
www.smoothroad.com

Custom Test Equipment • Mobile Technology Solutions

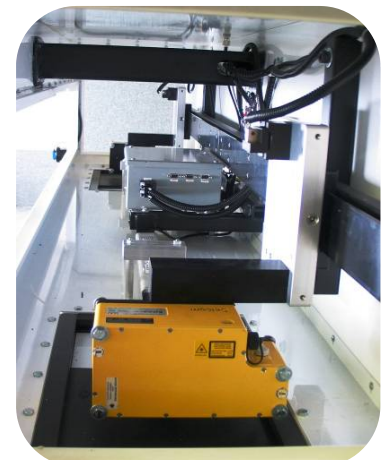
CS9250 Concrete Pavement Profiler



Lightweight/High Speed Trailer System With Wide Footprint Sensors for Concrete Pavements



Tows Behind Lightweight or Passenger Vehicle



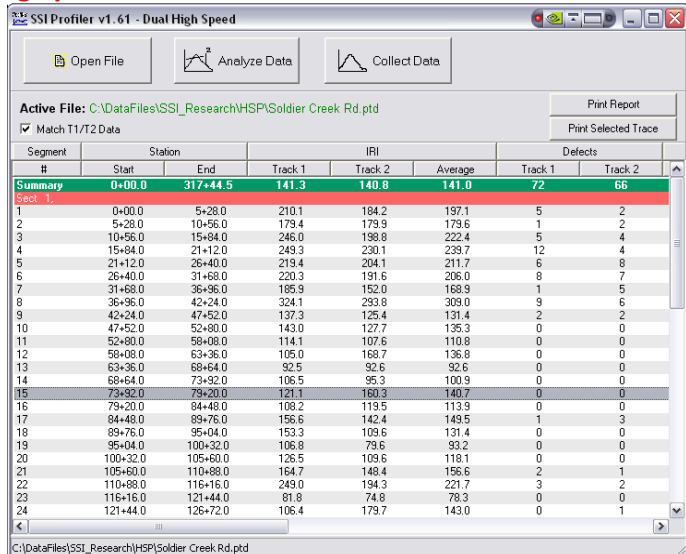
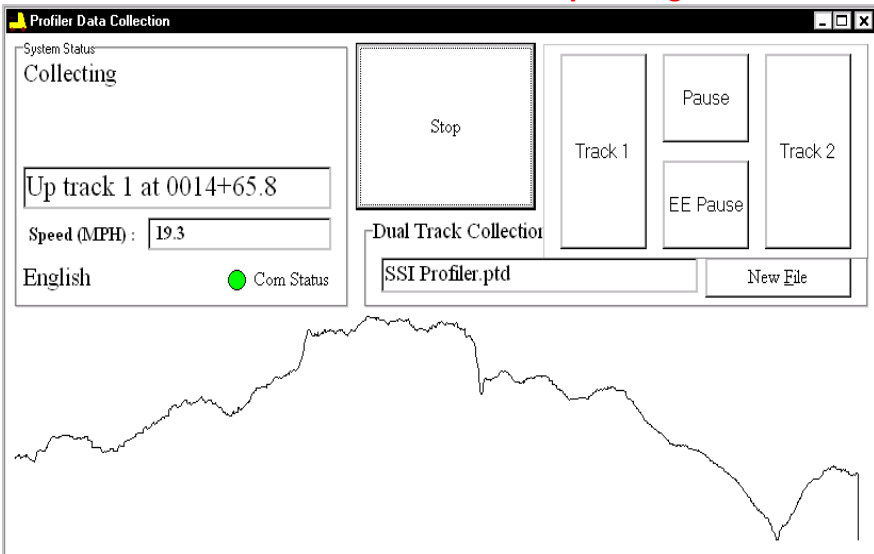
▲ Feature-Rich Windows Software Programs ▲

▲ No Wires! (only 12V DC power by tow vehicle) ▲

▲ Wide Footprint Laser Sensors ▲

HARDWARE FEATURES	SOFTWARE FEATURES
<ul style="list-style-type: none"> • Specially designed for concrete pavements. Wide footprint sensor (multiple single point or RoLine) to reduce impact of tines, grooves and diamond grinding on ride index values. • Functions as high speed profiling system when towed by truck or car. • Works as lightweight profiler behind a golf cart or all terrain vehicle. 	<ul style="list-style-type: none"> • Feature rich Windows software for calibration, data collection and analysis software run on touch-screen Toughbook computer. • On-Screen user's manual and instructions for profiling software. • Real time diagnostics continually monitor health of profiling system and facilitate prompt resolution of support issues.
<ul style="list-style-type: none"> • No Wires! Entire system runs on tow vehicle 12VDC power supply. • Ultra-compact profiling system components. All electronics and sensors smaller than Toughbook laptop used to operate the system. • ASTM Class I profiling device at all collection speeds. 	<ul style="list-style-type: none"> • Instant test results and on-screen view of profile traces and reports. • Collection system pauses if vehicle slows <5mph or when stopped. • Add new profile data to existing data files for comparison of original condition with constructed surfaces.
<ul style="list-style-type: none"> • Rugged suitcase enclosure for notebook computer, on-board printer (with power assisted paper spooling). • AC/DC power supplies. • Panasonic Toughbook 19 military specification notebook computer with daylight readable Touchscreen controls. 	<ul style="list-style-type: none"> • Profile reports and traces available on-screen, one-touch PDF images, hard copy from on-board printer, or in electronic format. • Colorized traces and highlights of bonus/penalty profile areas. • One-touch data export to ERD, PPF, and Excel templates (supplied).
<ul style="list-style-type: none"> • Single or dual track systems available. <i>(Note: single track systems have patented ability to report dual track profile traces and reports..)</i> • All-in-Cab operation—collect/analyze data without leaving vehicle. • Sensor modules adjust vertically/laterally for maximum flexibility. • RF radio wireless transmission of profile data. 	<ul style="list-style-type: none"> • Unmatched precision in detecting surface features exact dimensions of localized roughness—<i>Proven and Guaranteed!</i> • Localized roughness reports predict dimensions of grind/fill areas. • Simulation routines for estimating ride index and localized roughness after corrective grinding or overlays.
<ul style="list-style-type: none"> • Wide range of speeds. (~5 mph to 70 mph, depending on sensors). • Multiple data collection triggers for maximum flexibility. SSI reverse direction trigger collects exact stations without pre-marking test sections. Electric-eye and manual triggers also supplied. • Core components field installable and available by express shipping. 	<ul style="list-style-type: none"> • Profile data reported under various profile indices [International Roughness Index (IRI), Profilograph Index (PI), Ride Quality Index (RQI), Half Car Ride Index (HRI), Ride Number, etc.] • User-selectable data collection and analysis parameters (project details, filtering methods, blanking band, bump/dip templates, etc.).
<ul style="list-style-type: none"> • GPS subsystem (optional) with real-time display of GPS position, GPS correlation with profile stations, and Google Earth integration. • Surveying subsystem with high resolution RTK corrections available with integrated site design and machine control options. 	<ul style="list-style-type: none"> • Industry leading Windows software designed by PhD engineers with decades of profiling industry experience. • Desktop software supplied for viewing, analyzing, printing and emailing of profile data.
<ul style="list-style-type: none"> • Buy or Rent. 	<ul style="list-style-type: none"> • Encrypted raw data for infinite reanalysis with variable parameters.

▼ Industry Leading Windows Profiling System Software ▼



▲ COMPUTER INSTRUCTED DATA COLLECTION AND CALIBRATION ROUTINES ▲

▲ IMMEDIATE RESULTS WITH ADVANCED DATA ANALYSIS FEATURES ▲

SURFACE SYSTEMS & INSTRUMENTS, LLC

California Division
 501 Park Way, Mill Valley, California 94941
 Tel: (415) 781-6080 • Facsimile: (415) 358-4340
www.smoothroad.com

Kansas Division
 307 Plymate, Manhattan, Kansas 66502
 Tel: (785) 539-6305 • Facsimile: (415) 358-4340
info@smoothroad.com