



California
 501 Park Way
 Mill Valley, California 94941
 Telephone: (415) 781-6080
 Facsimile: (415) 358-4340

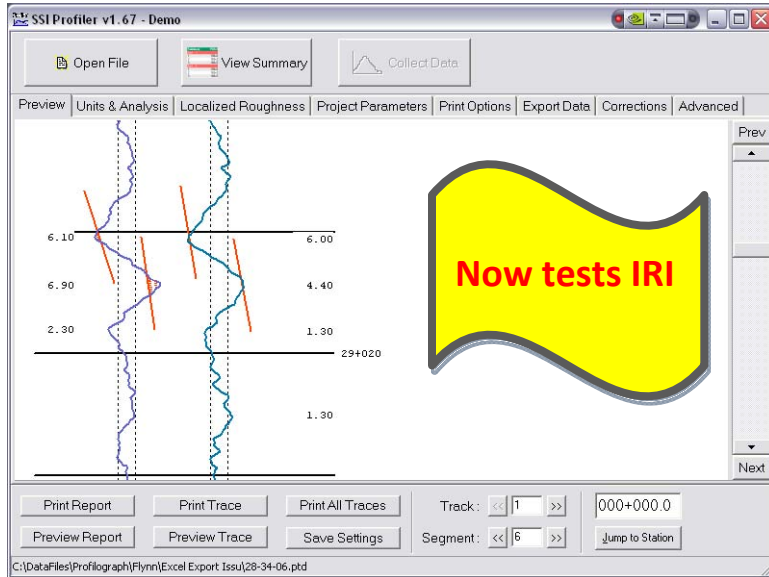
Kansas
 307 Plymate Lane
 Manhattan, Kansas 66502
 Telephone: (785) 539-6305
 Facsimile: (415) 358-4340

SURFACE SYSTEMS & INSTRUMENTS, LLC

www.smoothroad.com

Custom Test Equipment • Mobile Technology Solutions

CS8500 PROFILOGRAPH UPGRADE



▲ **Dual Wheel Path Profile Trace** ▲



▲ **Converts Existing Profilographs To Windows System** ▲



▲ **Mil-Spec Toughbook Computer with Touchscreen** ▲

HARDWARE FEATURES

- Retrofit kit for field installation with minimal effort (~1-2 hours).
- Guaranteed compliance with agency and ASTM specifications.
- Bi-directional operating capability (frame and steering hardware adjust in seconds to test adjacent wheel path without turn-around).
- Test dual wheel paths from either direction and any starting point.
- Windows Toughbook computer with Touchscreen controls.
- Toughbook computer is Mil-Spec model:<1.5% annual failure rate.
- Portable control housing for computer, printer and electronics.
- Control housing with AC/DC power supplies for field/office use.
- On-board thermal printer quickly prints traces and reports.
- Power assisted paper take-up auto-scrolls long profile traces.
- All major spare parts available by expedited delivery.
- Warranty on all individual and integrated system components.
- GPS subsystem available with real time display of GPS fix, coordinates merged with profile stations, and Google Earth images.
- On-site operator training and certification courses available.
- Customer support by telephone, email and on-site.

SOFTWARE FEATURES

- Easy to learn, easy to use Windows software programs.
- Test results in PRI, IRI, HRI, and RQI. • Results averaged.
- Feature rich software developed by ProScan engineering team.
- Computer instructed calibration and data collection routines.
- Dual wheel paths on one trace graph—reduce trace volume by 50%.
- Two trace reports allow assessment of profile across lane.
- English or Metric data collection and reporting.
- Display of test results, stations and profile trace during collection.
- Variable bumps/dips template. • Real time bump display and alarm.
- Special localized roughness reports display dimensions and peak magnitude for each bump and dip.
- Profile reports and traces available on-screen, printed, or by one-touch creation of PDF images.
- Data export to Excel (templates supplied), ProScan, ERD, and PPF).
- Raw profile data encrypted for maximum security.
- Profile data infinitely re-writable with different parameters.
- Adaptable to commonly used agency specifications.
- Add new data to existing profile data files for comparison of original and corrected surfaces. • Track improvement throughout project.
- Software license for field and desktop computers.
- Software updates by internet download (self-extracting).

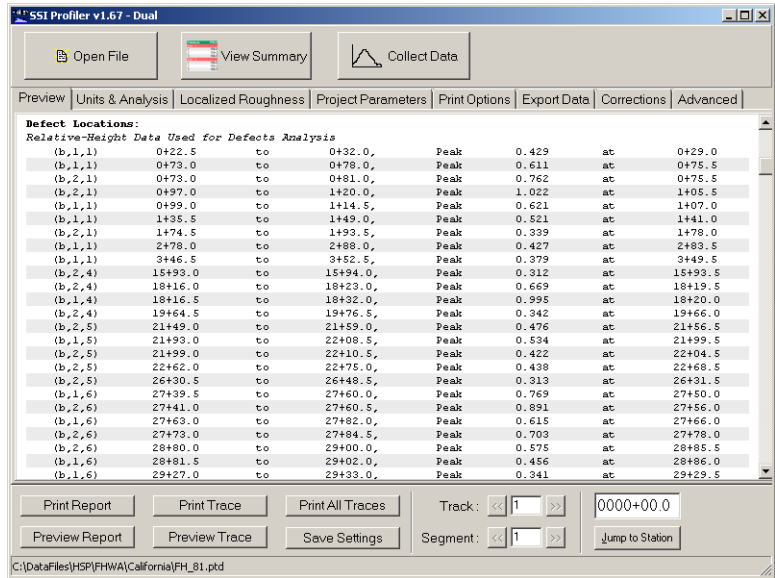




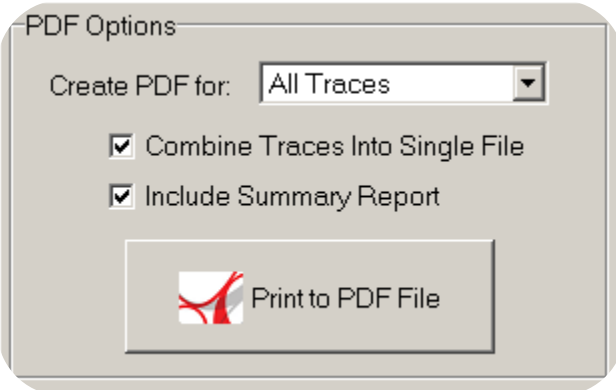
CS8500 PROFILOGRAPH UPGRADE



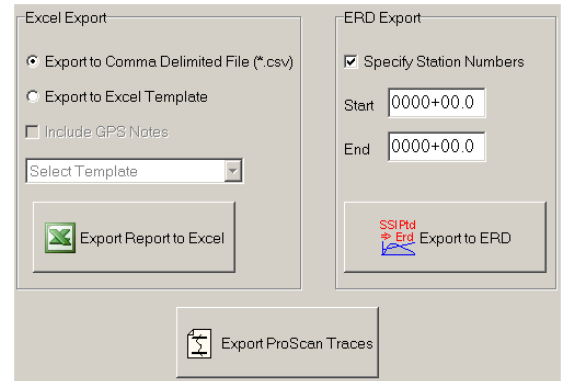
▲ **Field Installable Upgrade Kit with AC/DC Power Supplies** ▲



▲ **Custom Reports Pinpoint Dimensions of Bumps and Dips** ▲



▲ **PDF Printing of Profile Traces and Reports** ▲



▲ **Data Exports to Excel, ProScan and ERD/PPF** ▲

SSI Profiler v1.67 - Dual

Active File: C:\DataFiles\HSP\FHWA\California\FH_81.ptd

Match T1/T2 Data

Segment #	Station		IRI			Defects		Notes
	Start	End	Track 1	Track 2	Average	Track 1	Track 2	
Summary	0+00.0	252+39.8	186.8	228.7	207.8	168	292	
Sect 1.								
1	0+00.0	5+28.0	183.6	192.3	188.0	6	3	37 38' 49" N
2	5+28.0	10+56.0	84.3	94.7	89.5	0	0	37 38' 44" N
3	10+56.0	15+84.0	110.5	110.8	110.6	0	0	37 38' 41" N
4	15+84.0	21+12.0	149.0	144.7	146.9	1	3	37 38' 39" N
5	21+12.0	26+40.0	125.4	150.4	137.9	1	4	37 38' 36" N
6	26+40.0	31+68.0	188.8	203.3	196.1	5	4	37 38' 34" N
7	31+68.0	36+96.0	181.4	193.6	187.5	4	8	37 38' 30" N
8	36+96.0	42+24.0	173.9	186.4	180.1	3	4	37 38' 26" N
9	42+24.0	47+52.0	199.9	321.4	260.7	5	10	37 38' 20" N
10	47+52.0	52+80.0	117.5	172.9	145.2	0	3	37 38' 16" N

▲ **Main Screen Summary View of Test Results, Defects and GPS Coordinates** ▲

Surface Systems & Instruments, LLC

California Division

501 Park Way, Mill Valley, California 94941
Tel: (415) 781-6080 • Facsimile: (415) 358-4340
www.smoothroad.com

Kansas Division

307 Plymate Lane, Manhattan, Kansas 66502
Tel: (785) 539-6305 • Facsimile: (415) 358-4340
Email: info@smoothroad.com