



SURFACE SYSTEMS & INSTRUMENTS, INC.

Custom Test Equipment • Mobile Technology Solutions

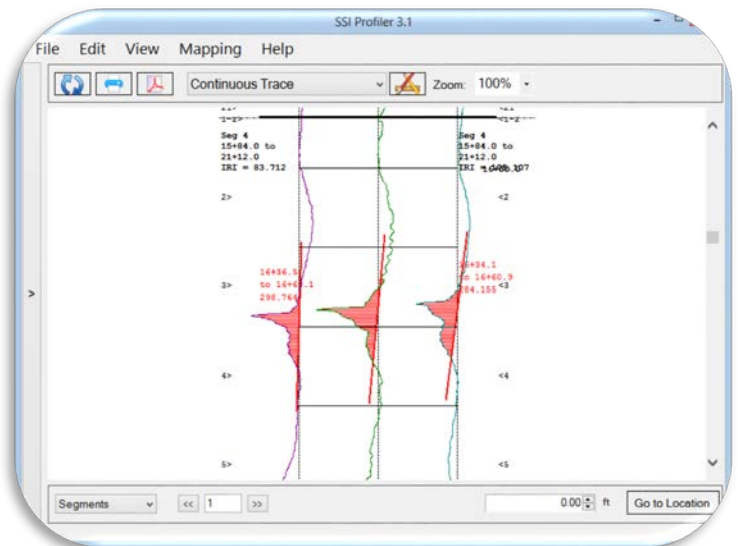
California 1845 Industrial Drive Auburn, California 95603 Telephone: (530) 885-1482 Facsimile: (530) 885-0593	Kansas 307 Plymate Lane Manhattan, Kansas 66502 Telephone: (785) 539-6305 Facsimile: (785) 539-6210
--	--

smoothroad.com

CS9200 Multiple Purpose Profiler



Self-Contained Hybrid Lightweight or High Speed Profiling System



▲ GPS Tracking Thru Profile Data in SSI Profiler 3, Google Earth/Maps ▲

▲ IRI and Localized Roughness Displayed by Individual Track ▲

DOT Compliant QA/QC Testing on All Pavement Types (=Quick ROI)

Profiling System Specifications

- Collect data up to 65 mph (105 kph)
- Meets **E950**, **M328, R054, R056-057**
- Meets or exceeds all Class I requirements of **ASTM E950**.
- 1 inch sampling interval at all collection speeds.
- Features LMI Technologies' new 5 kHz Gocator **wide beam lasers** for asphalt and concrete pavements.
- ±5g rated Accelerometers with 0.0001g accuracy.
- Proven ability to replicate wavelengths of ~0.25 feet (7.62mm) in excess of 760 feet (231.6 meters).

Compliance and Equipment

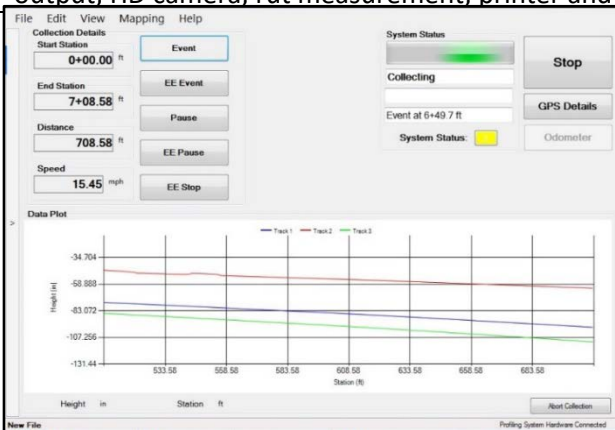
- All sensors and electronics embedded into a self-contained professionally engineered trailer platform.
- Adjustable air suspension • Interior storage.
- Complies with commonly used DOT specifications.
- Core electronics manufactured in an ISO 9001 facility.
- **TOUGHBOOK** rugged computer on all systems.
- Custom docking station mount for comfort and access.
- All systems run off of a 12 volt power supply

Operation, Training & Support

- One person operation from cab of host vehicle.
- Powered by 12V from tow vehicle • Speed range: 5-65 mph
- Operating ambient temperature range: 32° to 110° F.
- Moisture: profiling system components impervious to moisture (but quality of data degrades on wet pavement).
- Worldwide multi-lingual operator training available.
- Automatic software updates with SSI Profiler 3 v2015
- In field replacement of portable, modular components.
- **Warranty** and rapid response **customer support** on all profiling system components and operations.
- **Options:** high resolution GPS (RTK corrected) with CAD output, HD camera, rut measurement, printer and more.

Best-In-Class Profiling System Software

- Windows 7/8 Professional software programs.
- Easy calibration instructions for bounce test, laser verification, accelerometer and distance calibrations.
- On screen visual aids and fast reporting of profile results.
- Support for Google Earth, Google Maps and Microsoft MapPoint
- Navigate to locations within profile data using real time **GPS Tracker** and navigational/mapping capabilities.
- User selectable parameters for English and Metric units.
- Real time data display of profile trace.
- Electric Eye data triggers on each side of system function at 30+ feet (10+ meters).
- User programmable keyboard shortcuts
- SSI "Continuous Collection" software suspends collection below 5 mph and resumes when speed exceeds 5 mph.
- Pause areas integrated into collection. View paused areas separately or exclude.
- Multiple Profile Indexes: **IRI** (International Roughness Index, Mean IRI (**MRI**), Half Car Ride Index (HRI), Profile Ride Index (**PRI**), Ride Number (RN).
- Multiple outputs for **Areas of Localized Roughness:** IRI based roughness based on user specified thresholds; Rolling Straightedge, Profilograph must-grind bump template, Texas 1001-S localized roughness,
- Raw data is rewritable: change parameters at any time.
- User defined filtering values for high and low pass filters.
- Patented multiple trace reporting capability.
- Export data into (PPF, ERD), PDF, Excel, CSV, PRO, CAD, Survey, and Text
- Data is encrypted for security.



▲ Computer Instructed Calibration and Data Collection Routines ▲

▲ Gocator Wide Footprint Laser ▲

▲ In-Cab Touchscreen Computer ▲

SURFACE SYSTEMS & INSTRUMENTS, INC.

California

1845 Industrial Drive, Auburn, California 95603
 Tel: (415) 383-0570 • Fax: (415) 358-4340
smoothroad.com

Kansas

307 Plymate, Manhattan, Kansas 66502
 Tel: (785) 539-6305 • Fax: (785) 539-6210
info@smoothroad.com

