



SURFACE SYSTEMS & INSTRUMENTS, INC.

Custom Test Equipment • Mobile Technology Solutions

California

1845 Industrial Drive
Auburn, California 95603
Telephone: (415) 383-0570
Facsimile: (415) 358-4340

Kansas

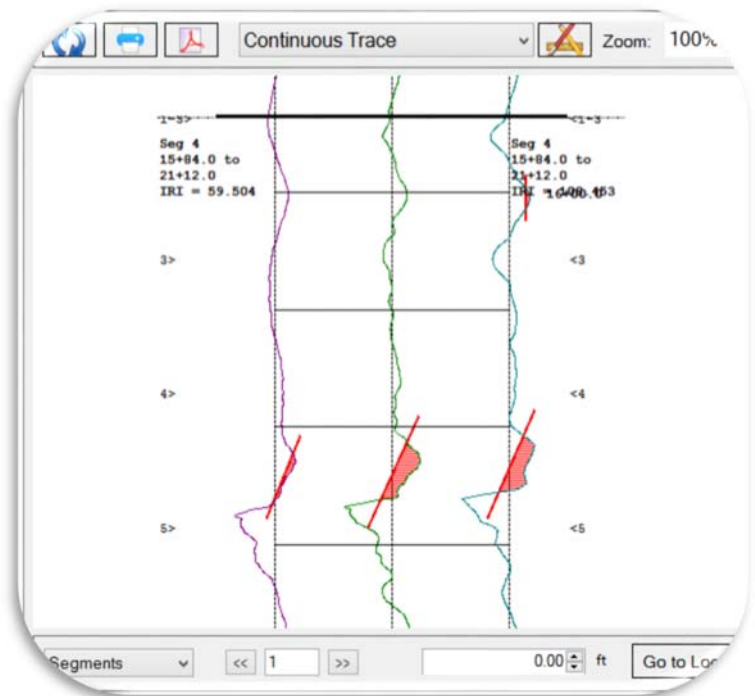
307 Plymate Lane
Manhattan, Kansas 66502
Telephone: (785) 539-6305
info@smoothroad.com

smoothroad.com

CS8550 PROFILOGRAPH



- Single Windows 10 Program for Calibration, Data Collection, Analysis, and Reporting.
- Instantly Generates Multiple Profile Indexes, Straightedge and Must-Grind Bumps
- System Collects in Either Direction; Displays Multiple Wheel Paths with Results Averaged.
- GPS Tracking for Locating Areas of Roughness and Pavement Features
- Buy, Rent or Hire (with certified operator)
- Guaranteed Compliance with Agency Specifications (e.g. California DOT Test Method 547).
- Rugged Computer with Touchscreen.

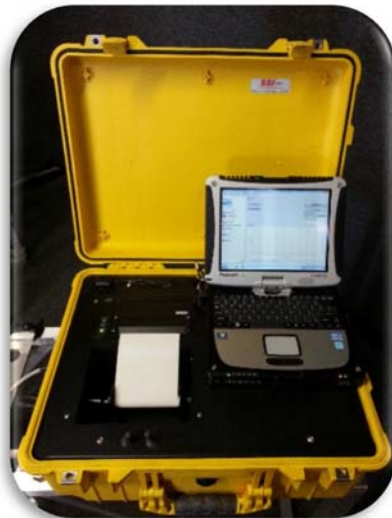


▲ Patented Multiple Wheel Track Path Profile Reporting ▲

HARDWARE	SOFTWARE
<ul style="list-style-type: none"> • Single piece 12' (3.66 m) aluminum frame. • Specialty profilograph for rolling straightedge or bridge structure testing (e.g. CalTrans Test Method 547). • Professionally engineered hardware refined over 50 years. 	<ul style="list-style-type: none"> • Easy to learn, easy to use Windows software. • Guided calibration and data collection procedures. • Stable, feature rich software (25+ years in development).
<ul style="list-style-type: none"> • Lightweight and modular for one-person assembly and operation. • Aluminum frame and support wheels assemble in minutes. • Portable operator control housing with AC/DC power supplies. 	<ul style="list-style-type: none"> • Collect multiple wheel paths in either direction. • Real-time GPS navigation along profile trace eases locating of bumps and features. • View and export data in Google Earth. • Report 2- or 3-wheel paths with results averaged. • Multiple trace reporting supports cross-lane visualization.
<ul style="list-style-type: none"> • Transports in back of pickup truck or optional enclosed trailer. • Optional bi-directional operation to test adjacent wheel path without device turn-around). 	<ul style="list-style-type: none"> • English or Metric units. • Real-time display of profile trace, bumps, index results, stationing and GPS positions during collection.
<ul style="list-style-type: none"> • Rugged computer with touchscreen. • Lightweight, quiet generator for AC power. • Optional DC battery power supply. 	<ul style="list-style-type: none"> • Must-grind bumps/dips display in real time with audible alarm. • Customized localized roughness reports display dimensions and peak magnitude for each bump and dip.
<ul style="list-style-type: none"> • GPS subsystem displays of GPS position, integrates coordinates with profile stations, localized roughness, and Google Earth. 	<ul style="list-style-type: none"> • Profile reports and traces on-screen, in PDF images, or hard copy. • Raw data exports to multiple formats (Excel, ERD/PPF for ProVal).
<ul style="list-style-type: none"> • Adjustable steering hardware. • Reversible brake for parking on sloped surfaces. • Optional enclosed cargo trailer with engineered hardware for secure storage and transit of CS8550 system. 	<ul style="list-style-type: none"> • Profile data infinitely re-writable with different parameters. • Parameters adjust comply with agency specifications for straightedge or bridge surface testing.
<ul style="list-style-type: none"> • Responsive technical support. • Warranty. 	<ul style="list-style-type: none"> • Append new surface data to existing files for comparison of original and corrected surfaces. • Track surface changes throughout project cycle.
<ul style="list-style-type: none"> • Optional on-board printer with power assisted paper take-up for auto-scrolling of profile traces. 	<ul style="list-style-type: none"> • Software license for CS8550 system and desktop computers. • On-site operator training and certifications available.
<ul style="list-style-type: none"> • Road profilograph configuration available (complies with ASTM E-1274, FAA, USACE and DOT specifications (CalTrans Test 526). • Buy, Rent or Hire (equipment only or with trained operator). 	<ul style="list-style-type: none"> • Raw data encrypted for maximum security. • Software updates by internet.



▲ Rugged Touchscreen Computer ▲



▲ Detachable Housing With AC/DC Power ▲



▲ Optional Enclosed Trailer ▲

Surface Systems & Instruments, Inc.

California

1845 Industrial Drive, Auburn, California 95603
 Tel: (415) 383-0570 • Facsimile: (415) 358-4340
smoothroad.com

Kansas

307 Plymate, Manhattan, Kansas 66502
 Tel: (785) 539-6305
 Email: info@smoothroad.com

