



**SURFACE SYSTEMS & INSTRUMENTS, INC.**

Custom Test Equipment • Mobile Technology Solutions

**California**

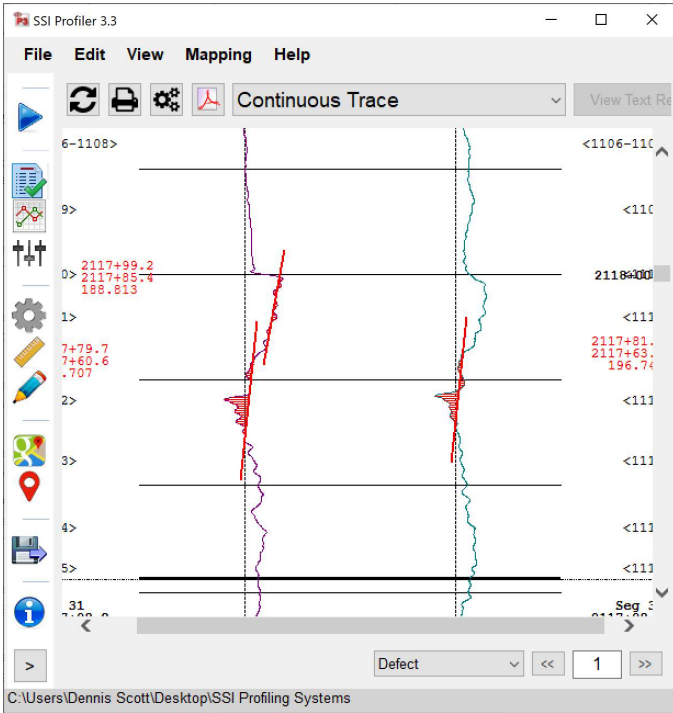
1845 Industrial Drive  
 Auburn, California 95603  
 Telephone: (415) 383-0570  
 Facsimile: (415) 358-4340

**Kansas**

307 Plymate  
 Manhattan, Kansas 66502  
 Telephone: (785) 539-6305  
 Facsimile: (785) 539-6210

[smoothroad.com](http://smoothroad.com)

# CS8600 Ultralight Profiler



- ▲ Sidewalk Condition Assessment for ADA Accessibility ▲
- ▲ Reports Cross-Slope Running Grade and Panel Evenness ▲
- ▲ Compatible with GPS/GIS Applications ▲



- ▲ **T3MOTION** Patroller Vehicle Platform ▲
- ▲ Zero Emissions • Hot Swappable Batteries ▲

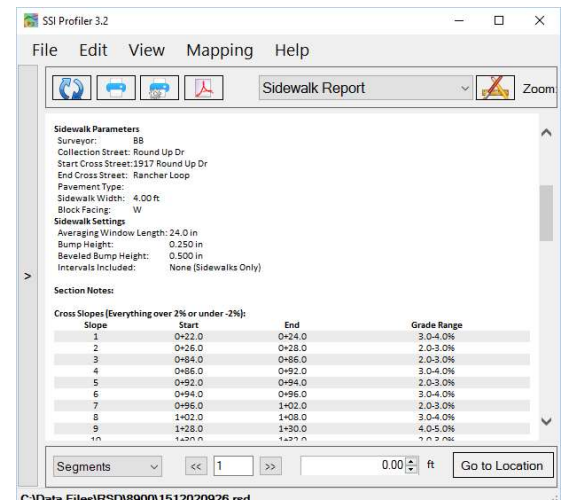
## Automated System for Measuring Sidewalk ADA Access Condition



- ▲ HD Camera with Georeferenced Images ▲



- ▲ Rugged Computer ▲



- ▲ Easy, Feature Rich Windows Software ▲

## HARDWARE FEATURES

## SOFTWARE FEATURES

- **T3MOTION** Patroller host vehicle (zero emissions).
- Hot swappable batteries.
- Lightweight (400lbs/157.8kg) • Zero degree turning radius.
- Collect data from 5-15 mph (8-24 kph) without zero-speed option.

- Windows 10 Professional operating system.
- Assistive software eases calibration, data collection and analysis.
- Real time diagnostics monitor system health.

- Meets E950 (Class 1) and specifications.
- Inertial profiler with  $\pm 5g$  accelerometers (0.0001g accuracy).
  - 1-inch (25mm) data sampling interval (adjustable).
  - Distance resolution: 0.13 mm/sample.

- Real time profile trace with interactive collection software
- Instant test results and reports.
- Optional automated ADA Access sidewalk testing: running grade, cross-slope, evenness, WPRI (Wheelchair Pathway Roughness Index).

- 32kHz single point Class 3B lasers.
- Optional 5 kHz wide-beam lasers reduce impact of tines, grooves or coarse textures on ride values and localized roughness.

- Fully integrated software for viewing and reporting surface condition criteria, images, position, local tagged events, and more.
- Adjustable templates for reporting under varying specifications.

- **TOUGHBOOK** rugged computer with touchscreen.
- Computer is removable for off-vehicle use.
- Core components embedded in Segway vehicle; no exposed parts.

- Configurable settings for reporting minimum/maximum thresholds for cross-slope, running slope, level changes and measured sidewalk cracks.
- Multiple data exports for consolidated reporting and use with third party software applications.

- Zero speed option to collect data from 0 to vehicle maximum.
- Camera option with geo-reference images and playback viewer.

- Support for Google Earth/Maps and ESRI ArcGIS
- Encrypted raw data for security and end user re-analysis.

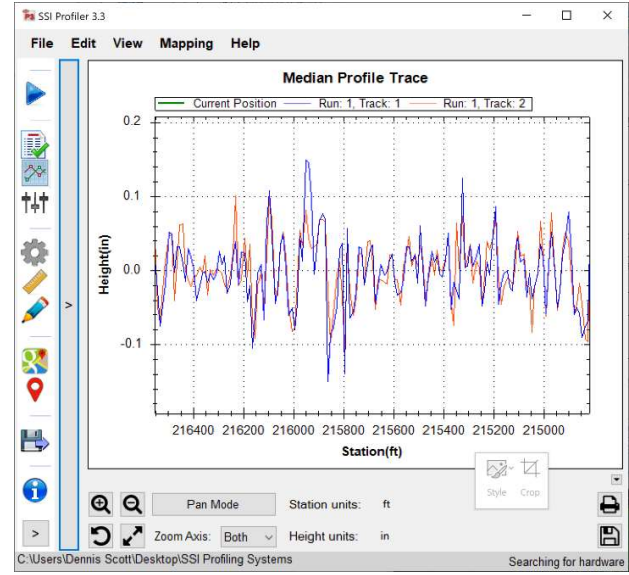
- GPS subsystem with positions merged with profile data for feature tagging, navigation along trace, and Google Earth/Maps support.
- Optional RTK corrected GPS or Total Stations surveying integration with 3D data formats for design and machine control applications.

- Automatic software updates with SSI Profiler 3
- Software licensed for use on desktop and additional computers.

- Guaranteed compliance with agency specifications.
- Buy or Rent (with or without operator).

- Export data into (PPF, ERD), PDF, Excel, CSV, PRO, CAD, Survey, GPS/GIS and Text.

### Industry Leading Profiling System Software (Windows 10):



- Computer Instructed Calibration and Collection Routines •
- Real-Time Display of Profile and IRI • Tag Events During Collection •

- Zoom/Pan Through Surface Data •
- Real Time GPS Navigation Along Trace •

## SURFACE SYSTEMS & INSTRUMENTS, INC.

**California**  
 1845 Industrial Drive, Auburn, California 94941  
 Tel: (415) 383-0570 • Fax: (415) 358-4340  
[smoothroad.com](http://smoothroad.com)

**Kansas**  
 307 Plymate, Manhattan, Kansas 66502  
 Tel: (785) 539-6305 • Fax: (415) 358-4340  
[info@smoothroad.com](mailto:info@smoothroad.com)