



SURFACE SYSTEMS & INSTRUMENTS, INC.

Custom Test Equipment • Mobile Technology Solutions

California

1845 Industrial Drive
 Auburn, California 95603
 Telephone: (415) 383-0570
 Facsimile: (415) 358-4340

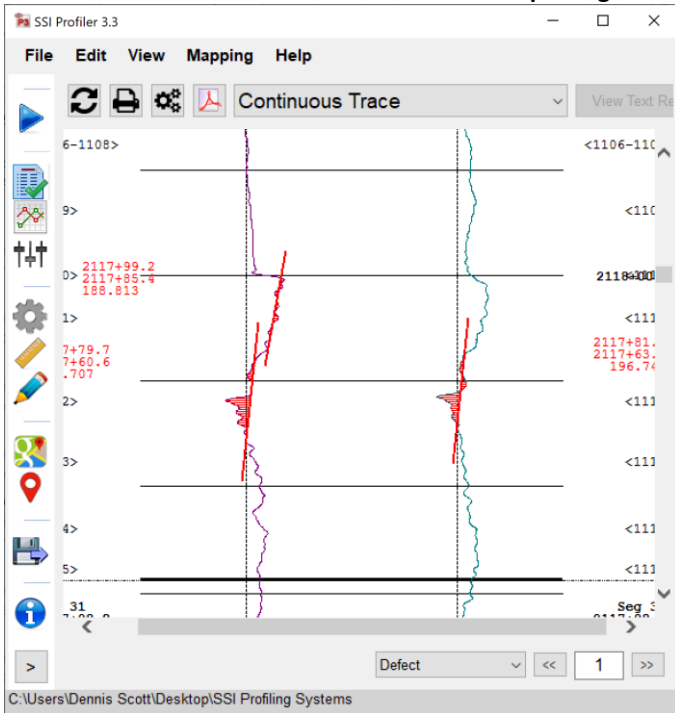
Kansas

307 Plymate
 Manhattan, Kansas 66502
 Telephone: (785) 539-6305
 Facsimile: (785) 539-6210

smoothroad.com

CS8600 Ultralight Profiler

▼ Windows Software • Detailed Surface Reporting ▼



- ▲ Generates Commonly Used Profile Indexes (IRI, PRI, RN) ▲
- ▲ Optional Sidewalk Condition Assessment for ADA Accessibility ▲
- ▲ One Inch (25mm) Data Sampling Interval ▲

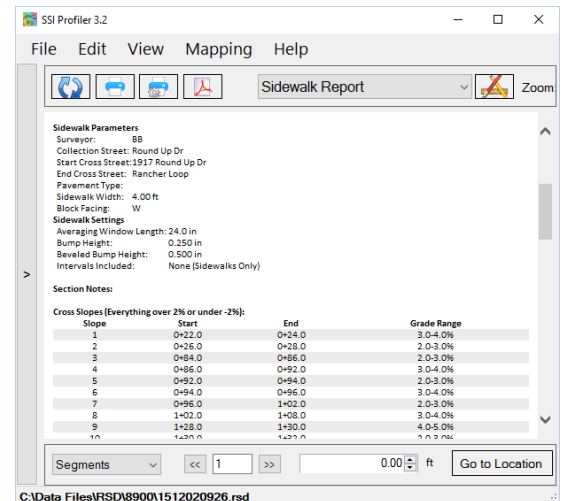


- ▲ **SEGWAY** SE3 Patroller Vehicle Platform ▲
- ▲ Zero Emissions • Hot Swappable Batteries ▲

Specialty Profiling System for Sidewalks, Runways or Road Surfaces



Panasonic
TOUGHBOOK



- ▲ Compatible With GPS/GIS Applications ▲
- ▲ Rugged Computer ▲
- ▲ Easy, Feature Rich Windows Software ▲

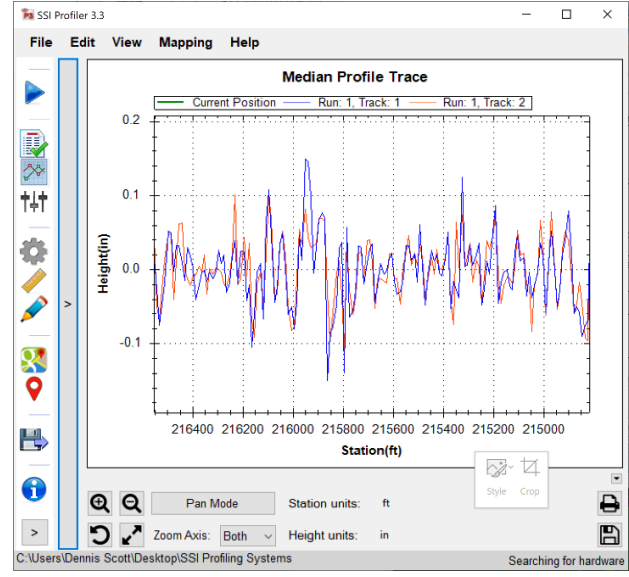
HARDWARE FEATURES

SOFTWARE FEATURES

- **SEGWAY** SE3 Patroller host vehicle (zero emissions).
 - Hot swappable batteries.
 - Lightweight (400lbs/157.8kg) • Zero degree turning radius.
 - Collect data from 5-15 mph (8-24 kph) without zero-speed option.
- Meets E950 (Class 1) and specifications.
- Inertial profiler with ± 5g accelerometers (0.0001g accuracy).
 - 1-inch (25mm) data sampling interval (adjustable).
 - Distance resolution: 0.13 mm/sample.
- Gocator 32kHz single point Class 3B lasers.
 - Optional 5 kHz wide-beam lasers reduce impact of tines, grooves or coarse textures on ride values and localized roughness.
- **TOUGHBOOK** rugged computer with touchscreen.
 - Computer is removable for off-vehicle use.
 - Core components embedded in Segway vehicle; no exposed parts.
- Zero speed option to collect data from 0 to vehicle maximum.
 - Camera option with geo-reference images and playback viewer.
- GPS subsystem with positions merged with profile data for feature tagging, navigation along trace, and Google Earth/Maps support.
 - Optional RTK corrected GPS or Total Stations surveying integration with 3D data formats for design and machine control applications.
- Guaranteed compliance with agency specifications.
 - Buy or Rent (with or without operator).

- Windows 10 Professional operating system.
 - Assistive software eases calibration, data collection and analysis.
 - Real time diagnostics monitor system health.
- Real time profile trace with interactive collection software
 - Instant test results and reports.
 - Optional automated ADA Access sidewalk testing: running grade, cross-slope, evenness, WPRI (Wheelchair Pathway Roughness Index).
- Unmatched precision in detecting surface features and exact dimensions of localized roughness.
 - Configurable bump/dip templates predict grind/fill areas.
- Multiple ride indexes (IRI, MRI, PRI, RN) and configurable localized roughness parameters.
 - User configurable analysis settings to meet specifications and contract requirements.
- Support for Google Earth/Maps and ESRI ArcGIS
 - Encrypted raw data for security and end user re-analysis.
- Automatic software updates with SSI Profiler 3
 - Software licensed for use on desktop and additional computers.
- Export data into (PPF, ERD), PDF, Excel, CSV, PRO, CAD, Survey, GPS/GIS and Text.

Industry Leading Profiling System Software (Windows 10):



- Computer Instructed Calibration and Collection Routines
- Real-Time Display of Profile and IRI • Tag Events During Collection

- Zoom/Pan Through Surface Data
- Real Time GPS Navigation Along Trace

SURFACE SYSTEMS & INSTRUMENTS, INC.

California
 1845 Industrial Drive, Auburn, California 94941
 Tel: (415) 383-0570 • Fax: (415) 358-4340
smoothroad.com

Kansas
 307 Plymate, Manhattan, Kansas 66502
 Tel: (785) 539-6305 • Fax: (415) 358-4340
info@smoothroad.com