

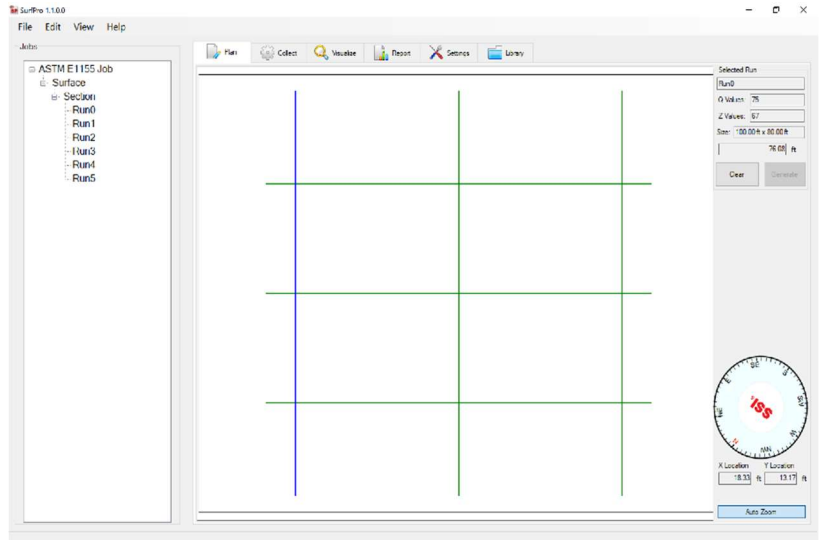
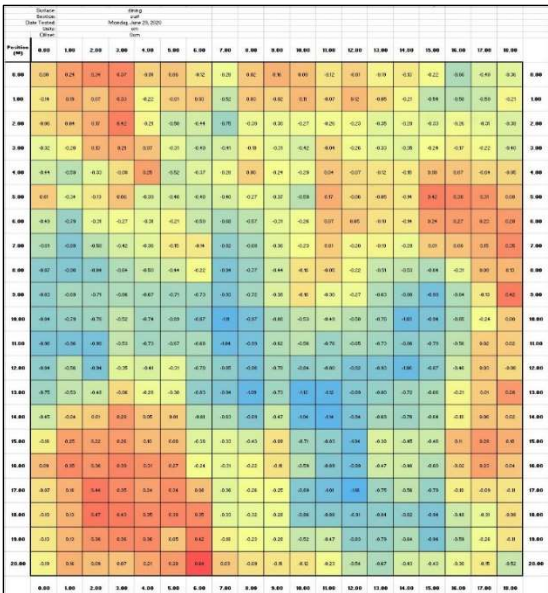


# SURFACE SYSTEMS & INSTRUMENTS, INC.

- Inertial & Walking Profilers • FF/FL • TR34 • DIN 18202 • Custom Test Equipment • Mobile Technology Solutions

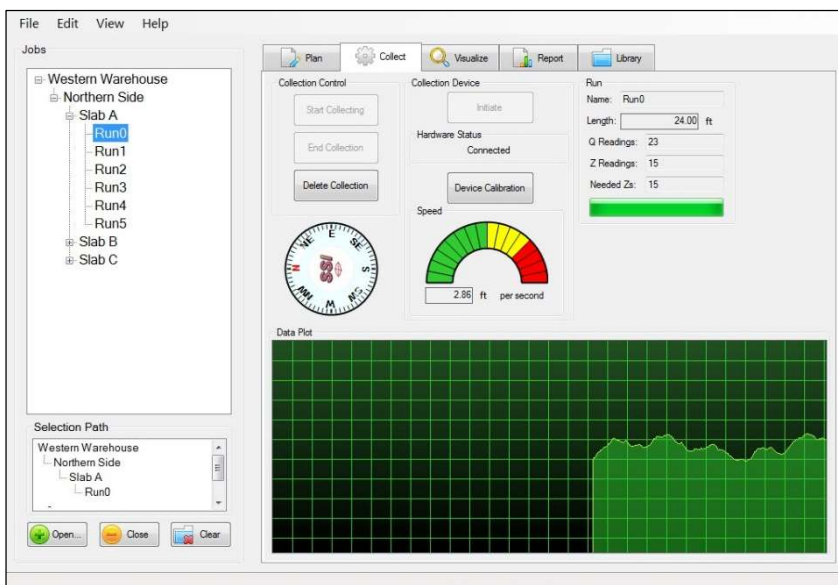
<b>California</b> 1845 Industrial Drive Auburn, California 95603 Telephone: (530) 885-1482 Facsimile: (530) 885-0593	<b>Kansas</b> 307 Plymate Lane Manhattan, Kansas 66502 Telephone: (785) 539-6305 Facsimile: (785) 539-6210
--	--

## CS8850 SurfacePro



▲ Automatically Generate Run Paths for FF/FL, TR34, DIN ▲

▲ Display Topography of Slab Surfaces ▲










▲ View Surface Contours in Real Time During Collection ▲



▲ Unique/Modular Walk-Behind Equipment ▲

## Automated FF/FL, TR34, DIN Layout and Surface Visualization

Hardware	Software
<ul style="list-style-type: none"> <li>➤ Equipment based on proven CS8800 pavement profiler</li> <li>➤ Custom designed hardware for profiling applications</li> <li>➤ Modular design of all components               <ul style="list-style-type: none"> <li>• Allows for simple and fast troubleshooting</li> </ul> </li> <li>➤ Can be used on all types of slabs or pavement</li> <li>➤ Double use as a survey, reference, or road profiler               <ul style="list-style-type: none"> <li>• Can replace rod and level measurement (ASTM  E1364 or  R40)</li> </ul> </li> <li>➤ Perform collections and report data on a Panasonic Toughbook computer or Microsoft SurfacePro.               <div style="display: flex; justify-content: space-around; align-items: center;">   </div> <ul style="list-style-type: none"> <li>• Remove computer for other uses</li> </ul> </li> <li>➤ Integrated inclinometer stores profile elevations and slab condition based on distance traveled</li> <li>➤ Quick assembly. • Simple, one-person operation</li> <li>➤ Quick calibration steps to begin profiling</li> <li>➤ Collapsible handle for compact transport</li> <li>➤ Reusable storage container</li> <li>➤ Long life lithium battery</li> <li>➤ True-round wheels offer superior precision</li> <li>➤ GPS available for outdoor applications</li> </ul>	<ul style="list-style-type: none"> <li>➤ Windows software program for easy operation.</li> <li>➤ Generates FF/FL in compliance with ASTM  E-1155</li> <li>➤ Produces TR-34 compliant Property E and F</li> <li>➤ DIN 18202 straightedge report, user configurable heights</li> <li>➤ High resolution data sampling interval ≤1 inch (2.54cm).</li> <li>➤ Visual reporting feature that outputs a topographic map</li> <li>➤ Integrated compass within map floor plan</li> <li>➤ Can have software calculate the Z-Values automatically to find most efficient collection path</li> <li>➤ <b>New:</b> Grid collection feature allows for survey quality data through intra-section run meshing</li> <li>➤ Ability to manually calculate and create run paths.</li> <li>➤ Simple instructions to calibrate and collect data</li> <li>➤ <b>Fast:</b> collect at a continuous speed of 1-3 ft/s (1m/s).</li> <li>➤ Differentiate between Project, Surfaces, Sections, and Runs with the tree-style organization</li> <li>➤ Collections are saved in a library for later use               <ul style="list-style-type: none"> <li>• Access all previous projects saved on computer</li> </ul> </li> <li>➤ Configurable minimum FF and FL values for reports</li> <li>➤ Print results directly from the program</li> <li>➤ Export reports to  Excel or  PDF</li> </ul>

Report of Floor Flatness/Levelness  
SSI CS8800 Surface Profiling System  
Licensed to Surface Systems and Instruments, Inc. of Auburn, CA

Surface: Building A

Specification: E1155 Specification

Date Built: October 23, 2019  
Date Tested: February 13, 2020  
Surface Dimensions: Width - 156.50 ft, Height - 116.50 ft

	Flatness	Levelness
Specified	50.00	35.00
Minimum	20.00	15.00

Section Results: South

Run	Flatness		Levelness	
	Score	Readings	Score	Readings
Run0	74.28	112	16.52	104
Run1	42.53	112	41.30	104
Run2	49.76	112	35.85	104
Run3	51.42	112	34.57	104
Run4	64.98	112	37.37	104
Run5	58.93	112	25.39	104
Run6	56.68	112	36.63	104
Run7	68.44	112	45.98	104

Section Flatness: 55.84 / 896  
Section Levelness: 29.25 / 832

TR-34 Specification

Floor Classification	1884 Free Movement Floor Tolerances	
	Property F (mm)	Property E (mm)
FM1	3.00	6.00
FM2	2.00	4.00
FM3	2.00	4.00
FM4	2.00	4.00

Run	Run Length (m)	FM1 (20th Percentile)				FM2 (20th Percentile)				FM3 (20th Percentile)				FM4 (20th Percentile)			
		Property F (Pass/Fail)	Property E (Pass/Fail)	Property F (mm)	Property E (mm)	Property F (Pass/Fail)	Property E (Pass/Fail)	Property F (mm)	Property E (mm)	Property F (Pass/Fail)	Property E (Pass/Fail)	Property F (mm)	Property E (mm)	Property F (Pass/Fail)	Property E (Pass/Fail)	Property F (mm)	Property E (mm)
Run1- Origin	20.00	Pass	Fail	1.776	4.982	Pass	Pass	1.776	4.982	Pass	Pass	1.776	4.982	Pass	Pass	1.776	4.982
Run1	20.00	Pass	Fail	1.933	5.463	Pass	Pass	1.933	5.463	Pass	Pass	1.933	5.463	Pass	Pass	1.933	5.463
Run7	20.00	Fail	Fail	1.874	5.078	Pass	Fail	1.874	5.078	Pass	Fail	1.874	5.078	Pass	Fail	1.874	5.078
Run10	20.00	Pass	Fail	1.817	4.538	Pass	Pass	1.817	4.538	Pass	Pass	1.817	4.538	Pass	Pass	1.817	4.538
Run13	20.00	Pass	Pass	1.957	3.239	Pass	Pass	1.957	3.178	Pass	Pass	1.957	3.178	Pass	Pass	1.957	3.178
Run16	20.00	Pass	Fail	1.753	5.211	Pass	Pass	1.753	5.211	Pass	Pass	1.753	5.211	Pass	Pass	1.753	5.211
Run19- Office 1	18.00	Pass	Pass	1.380	3.889	Pass	Pass	1.380	3.889	Pass	Pass	1.380	3.889	Pass	Pass	1.380	3.889
Run19- Office 2	18.00	Pass	Fail	1.447	6.091	Pass	Pass	1.447	6.091	Pass	Pass	1.447	6.091	Pass	Pass	1.447	6.091
Run21- Office 3	20.00	Pass	Fail	1.477	6.091	Pass	Pass	1.477	6.091	Pass	Pass	1.477	6.091	Pass	Pass	1.477	6.091

Run1 - Origin



Run1 - Origin



▲ ASTM E1155 FF/FL Report ▲

▲ TR34 Report ▲

## SURFACE SYSTEMS & INSTRUMENTS, INC.

### California

1845 Industrial Drive, Auburn, California 95603  
Tel: (415) 383-0570 • Fax: (415) 358-4340  
[smoothroad.com](http://smoothroad.com)

### Kansas

307 Plymate, Manhattan, Kansas 66502  
Tel: (785) 539-6305 • Fax: (785) 539-6210  
[info@smoothroad.com](mailto:info@smoothroad.com)

