



**SURFACE SYSTEMS & INSTRUMENTS, INC.**

Custom Test Equipment • Mobile Technology Solutions

**California**

1845 Industrial Drive  
 Auburn, California 95603  
 Telephone: (415) 383-0570  
 Facsimile: (415) 358-4340

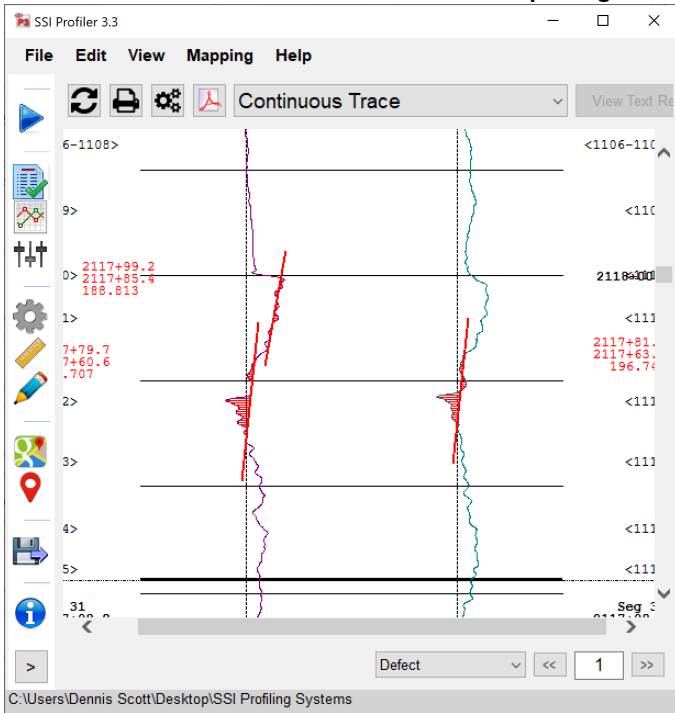
**Kansas**

307 Plymate  
 Manhattan, Kansas 66502  
 Telephone: (785) 539-6305  
[info@smoothroad.com](mailto:info@smoothroad.com)

[smoothroad.com](http://smoothroad.com)

# CS8600-P ADA Access Profiler

▼ Windows Software • Detailed Surface Reporting ▼



- ▲ Sidewalk Condition Assessment for ADA Accessibility ▲
- ▲ Reports Cross-Slope, Running Grade, Panel Evenness ▲
- ▲ Compatible With GPS/GIS Applications ▲

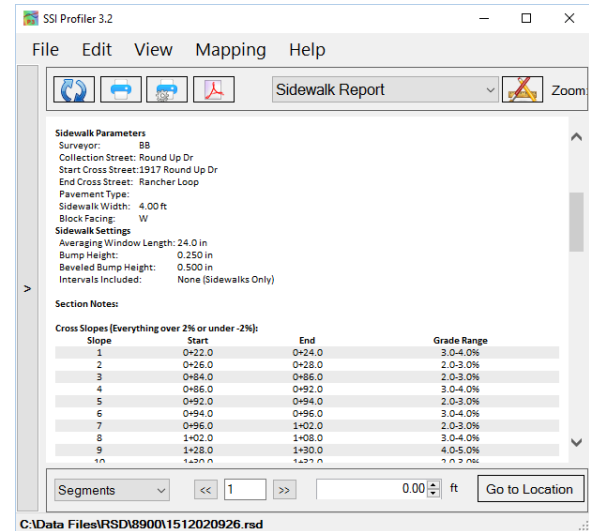
- ▲ **POLARIS** ATV Vehicle Platform ▲
- ▲ Narrow Footprint • Rapid Data Collection ▲

## Automated System for Measuring Sidewalk ADA Access Condition



**Panasonic**  
**TOUGHBOOK**

▲ Rugged Computer ▲



▲ Easy, Feature Rich Windows Software ▲

▲ HD Camera with Georeferenced Images ▲

## HARDWARE FEATURES

## SOFTWARE FEATURES

- **POLARIS** Sportsman ATV host vehicle.
- DOT rated tires. • Lateral footprint under 48.”
- Lightweight (~875lbs/397kg) • Smooth riding suspension.
- Collect data from 5-15 mph (8-24 kph) without zero-speed option.

- Windows 10/11 Professional operating system.
- Assistive software eases calibration, data collection and analysis.
- Real time diagnostics monitor system health.

- Test sidewalks under ADAAG guidelines and ANSI/UFAS standards.
- INS/GNSS dual antenna instrumentations generates accurate measurement of running grade and cross-slope.
- Distance and position measurement by encoder and GPS.

- Real time profile trace with interactive collection software
- Instant test results and reports.
- Optional automated ADA Access sidewalk testing: running grade, cross-slope, evenness, WPRI (Wheelchair Pathway Roughness Index).

- 32kHz Class 3B point laser for assessing panel evenness.
- Optional 5 kHz wide-beam lasers reduce impact of tines, grooves or coarse textures on ride values and localized roughness.

- Fully integrated software for viewing and reporting surface condition criteria, images, position, local tagged events, and more.
- Adjustable templates for reporting under varying specifications.

### TOUGHBOOK

- **TOUGHBOOK** rugged computer with touchscreen.
- Computer is removable for off-vehicle use.
- Core components embedded in Segway vehicle; no exposed parts.

- Configurable settings for reporting minimum/maximum thresholds for cross-slope, running slope, level changes and measured sidewalk cracks.
- Multiple data exports for consolidated reporting and use with third party software applications.

- Zero speed option to collect data from 0 to vehicle maximum.
- Camera option with geo-reference images and playback viewer.

- Support for Google Earth/Maps and ESRI ArcGIS
- Encrypted raw data for security and end user re-analysis.

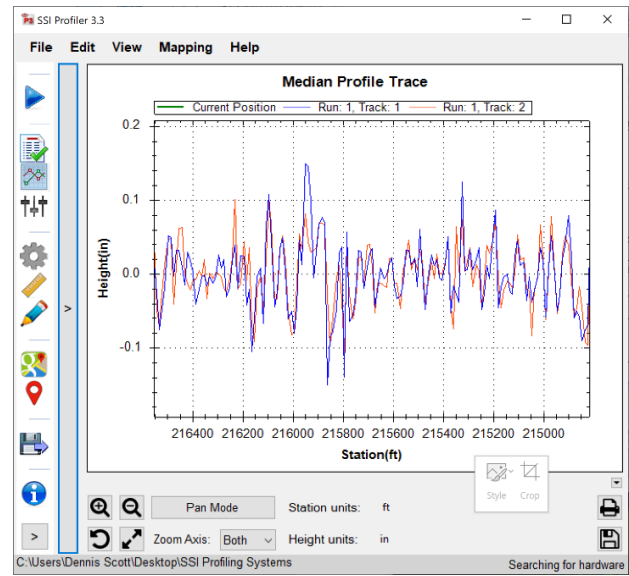
- GPS subsystem with positions merged with surface data for feature tagging, navigation along trace, and Google Earth/Maps support.
- Optional RTK corrected GPS integration with 3D data formats.

- Automatic software updates with SSI Profiler 3
- Software licensed for use on desktop and additional computers.

- Guaranteed compliance with agency specifications.
- Buy or Rent (with or without operator).

- Export data into PROVAL (PPF, ERD), PDF, Excel, CSV, PRO, CAD, Survey, GPS/GIS and Text.

## Industry Leading Profiling System Software (Windows 10):



- **Computer Instructed Calibration and Collection Routines**
- **Real-Time Display of Surface Profile** • **Tag Events During Collection**

- **Zoom/Pan Through Surface Data**
- **Real Time GPS Navigation Along Trace**

## SURFACE SYSTEMS & INSTRUMENTS, INC.

### California

1845 Industrial Drive, Auburn, California 94941  
 Tel: (415) 383-0570 • Fax: (415) 358-4340  
[smoothroad.com](http://smoothroad.com)

### Kansas

307 Plymate, Manhattan, Kansas 66502  
 Tel: (785) 539-6305 • Fax: (415) 358-4340  
[info@smoothroad.com](mailto:info@smoothroad.com)