



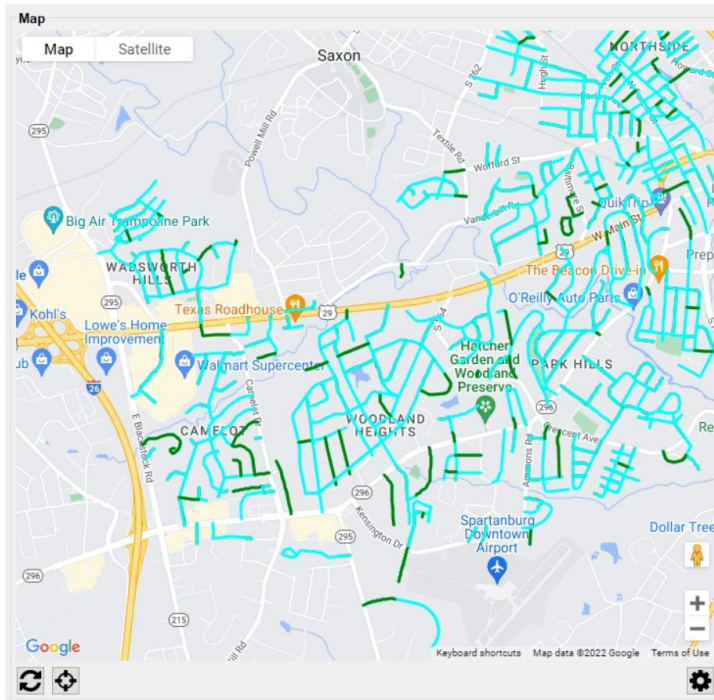
39.1852186N, -96.6082708W

Pavement Management

SSI Network Manager Software

▲ Maps Color-Code Paths and Current Position ▲

- Import RSD collection files to be linked together with the centerline paths
- Include more than one pass per centerline path for roads with multiple lanes



SSI_01

SSI_02

☐ Use Segments

Segment Length: 528.00 ft

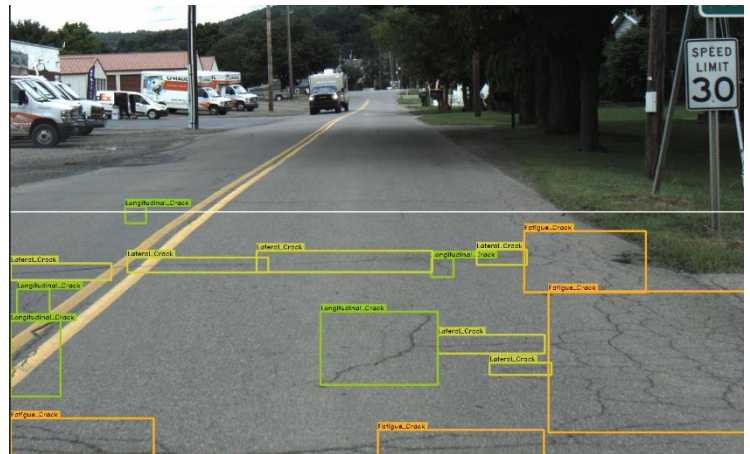
☒ Add Statistic Units

☐ Use Station Format

Excel Column Name	Attribute Type (Source)	Attribute Name
Path ID	Network	Path Name
Route ID	Network	RouteID
Maintenance Responsibility	Network	MaintResp
Length	Statistics	Measured Length
IRI LWP	Statistics	Roughness Index Left
IRI RWP	Statistics	Roughness Index Right
IRI Average	Statistics	Roughness Index Average
Cross-Slope	Statistics	Cross Slope
Start Lat/Long	Statistics	Start Latitude and Longitude
End Lat/Long	Statistics	End Latitude and Longitude
Overlap Percentage	Statistics	Overlap Percentage
Heading	Statistics	Heading

*If the column name is left blank, attribute name will be used for the column name in exported excel file.

- Import pavement condition ratings to link with profile data – options for imagery analysis recommended by SSI
- Export results of IRI, MRI, localized roughness, macrotexture, ROW images, faulting, rutting, cross-slope, and condition rating to Excel or shapefile.



Suitable for highways, residential streets, unpaved roads, and urban areas with the Zero-Speed® profiler

SURFACE SYSTEMS & INSTRUMENTS, INC.

California Division

1845 Industrial Drive, Auburn, California 95603

Tel: (415) 383-0570 • Fax: (415) 358-4340

smoothroad.com

Kansas Division

307 Plymate, Manhattan, Kansas 66502

Tel: (785) 539-6305 • Fax: (785) 539-6210

info@smoothroad.com